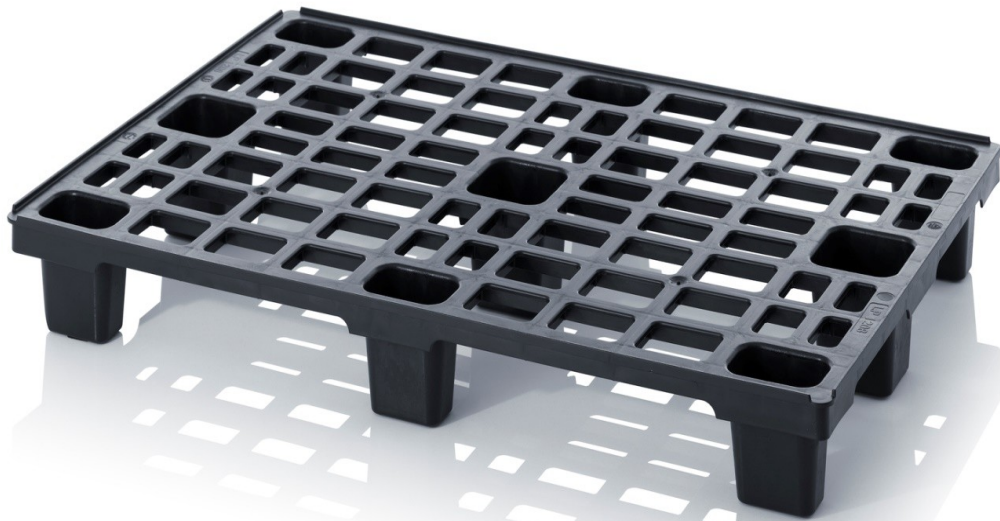


LIGHT PALLET 120X80 HIGH PERFORMANCE



Technical Features	
Dimensions in mm (L x D x H)	800 x 1200 x 148
Height (mm)	148
Height available for forks alongside 1200 mm	120
Thickness of the load deck in mm	26
Weight (Kg)	4,1 kg
Dynamic load (Kg)	500 kg
Static load (Kg)	1.200 kg
Nestable	SI
Number of pallet for each standard stack	82
Height of standard stack for truck loading	2600
Weight of standard stack	336
Pallet deliverable per truck (mt. 13,60)	2706
Material	Recycled P.P. or Recycled HDPE
Allowable temperature range	-20°C +60°C
Standard colour (any colour available on request)	Black
Safety rim height on load deck (mm)	7

- The loading tests have been carried out applying uniform load on the pallet surface;
- It is possible to stack pallets with load up to the maximum static capacity, however each pallet must lay on a flat surface and the vertical alignment must be guaranteed
- Technical features can be changed at any time without previous notice